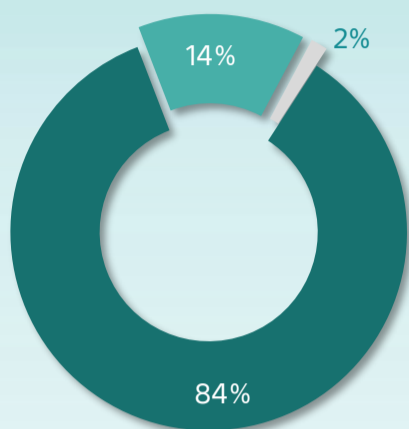
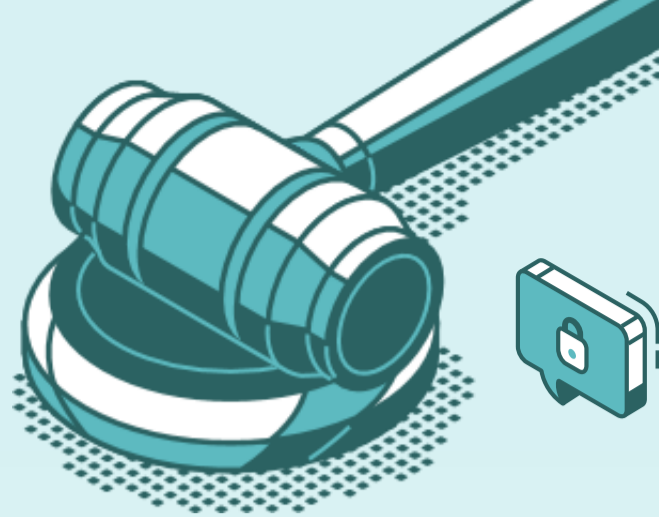


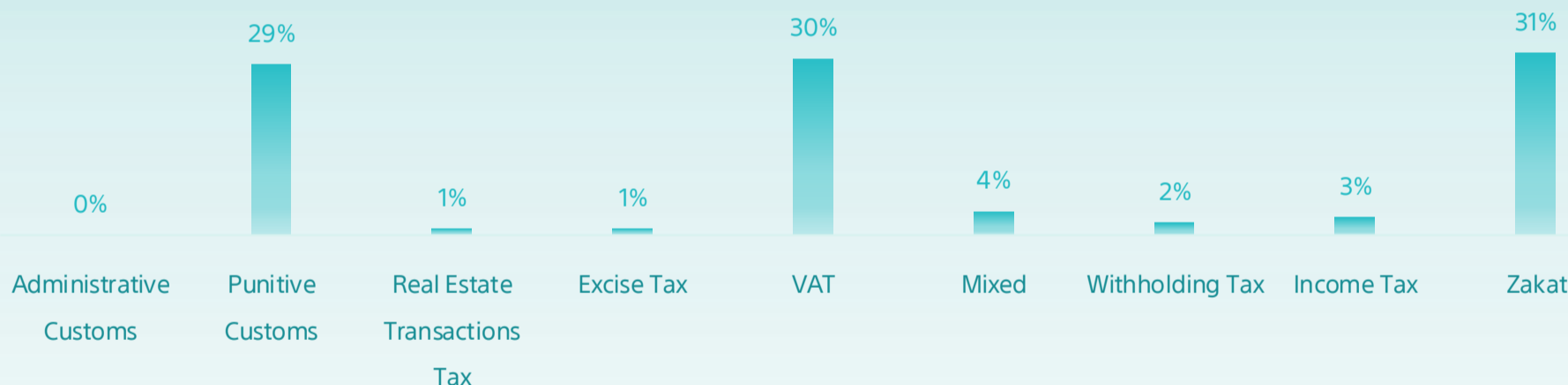
All Cases Report

Until Mar 2023



Initial Appeal Reconsider

Classification	Initial	Appeal	Reconsider	Total
Zakat	37,843	8,890	1,219	47,952
Income Tax	3,290	896	74	4,260
Withholding Tax	1,894	699	71	2,664
Mixed	4,499	1,237	97	5,833
VAT	39,956	6,431	706	47,093
Excise Tax	677	180	13	870
Real Estate Transactions Tax	1,143	117	13	1,273
Punitive Custom	41,593	3,243	168	45,004
Administrative Customs	350	135	17	502
Total	131,245	21,828	2,378	155,451



Top cases classification / type



Fine (VAT)
12%



Tax Assessment-
Discretion (Zakat)
15%



Tax Assessment-
Accounts (Zakat)
16%



Tax Return & Fine (VAT)
9%



Disposing of a restricted cleared merchandise
with a pledge not to dispose of.
(Customs)
19%

